

Circlip Pliers Set

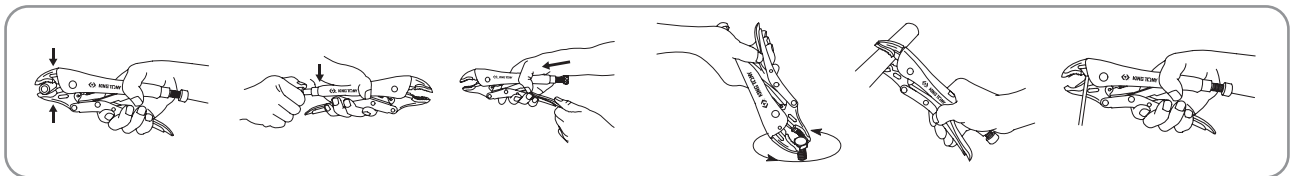
KT NO.	PC.	Contents							
42114GP	4	 68HS-07	 68SS-07	 68HB-07	 68SB-07	062	1 / 32		
42154GP	4	 66HS-07	 66SB-07	 66HB-07	 66SS-07	0.84	1 / 32		
42116GP	6	 68HS-07	 68HB-07	 68HS-10	 68SS-07	 68SB-07	 68SS-10	1.33	1 / 18



► Nylon pouch bag

• Finishing - option 1 : chrome plated (R) / option 2 : nickel plated (N)

Locking Pliers



6011

- Curved jaw with wire cutter
- With adjusting screw and release lever
- ASME B107.500-2010



MATERIAL - Jaw : Spring alloy steel
Handle : Chrome molybdenum alloy steel



6011R



6011N

KT NO.	Overall length inch	mm	Jaw capacity mm		
6011-05R	5-1/2	142	29	173	6 / 48
6011-07R	7	185	38	352	8 / 32
6011-07N	7	185	38	351	8 / 32
6011-10R	10	254	48	542	8 / 32
6011-10N	10	254	48	506	8 / 32

6012

- V jaw with wire cutter
- With adjusting screw and release lever
- ASME B107.500-2010



MATERIAL - Jaw : Chrome molybdenum alloy steel
Handle : Chrome molybdenum alloy steel



KT NO.	Overall length inch	mm	Jaw capacity mm		
6012-07N	7	175	33	357	8 / 32
6012-10N	10	254	45	541	8 / 32

6013-10R

- Large curved jaw
- 3X more gripping power hold object tighter
- Turn hexagon screw adjust pressure
- Quick trigger release lever
- ASME B107.500-2010



MATERIAL - Jaw : Chrome molybdenum alloy steel
Handle : Chrome molybdenum alloy steel



KT NO.	Overall length inch	mm	Jaw capacity mm		
6013-10R	10	254	50	550	8 / 32

6031

- Straight jaw
- With adjusting screw and release lever
- ASME B107.500-2010



MATERIAL - Jaw : Spring alloy steel
Handle : Chrome molybdenum alloy steel



6031R



6031N

KT NO.	Overall length inch	mm	Jaw capacity mm		
6031-05R	5	143	22	166	6 / 48
6031-05N	5	143	22	166	6 / 48
6031-07R	7	185	33	372	8 / 32
6031-07N	7	185	33	371	8 / 32
6031-10R	10	254	45	538	8 / 32
6031-10N	10	254	45	535	8 / 32