

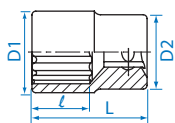
Standard Socket

KT No. & D1



2330M

- Metric-DIN 3124, ISO 2725-1
- Inch-ANSI/ASME B107.1



2330S 1/4"

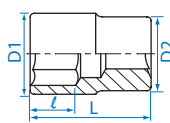


KT NO.	mm	D1 mm	D2 mm	l mm	L mm	⚖️	📦
233004M	4	6.8	11.8	4	24	9	20 / 600
233045M	4.5	7.4	11.8	5	24	9	20 / 600
233005M	5	8.0	11.8	6	24	9	20 / 600
233055M	5.5	8.7	11.8	6	24	11	20 / 600
233006M	6	9.2	11.8	7	24	11	20 / 600
233007M	7	10.3	11.8	7	24	10	20 / 600
233008M	8	11.4	11.8	8	24	12	20 / 600
233009M	9	12.8	12.0	8	24	12	20 / 600
233010M	10	14.3	13.0	9	24	13	12 / 360
233011M	11	15.8	14.2	9	24	18	12 / 360
233012M	12	16.8	15.5	9	24	21	12 / 360
233013M	13	17.8	16.5	9	24	23	12 / 360
233014M	14	19.6	18.5	9	24	31	10 / 360

KT NO.	inch	D1 mm	D2 mm	l mm	L mm	⚖️	📦
233005S	5/32	6.8	11.8	4	24	9	20 / 600
233006S	3/16	7.9	11.8	6	24	9	20 / 600
233007S	7/32	8.7	11.8	6	24	10	20 / 600
233008S	1/4	9.5	11.8	7	24	10	20 / 600
233009S	9/32	10.3	11.8	7	24	10	20 / 600
233010S	5/16	11.4	11.8	8	24	10	20 / 600
233011S	11/32	13.7	12.2	8	24	12	20 / 600
233012S	3/8	14.2	13.0	8	24	14	12 / 360
233014S	7/16	15.8	14.2	9	24	18	12 / 360
233015S	15/32	16.8	15.5	9	24	21	12 / 360
233016S	1/2	17.6	16.5	9	24	24	12 / 360

2335M

- Metric-DIN 3124, ISO 2725-1
- Inch-ANSI/ASME B107.1



2335S 1/4"



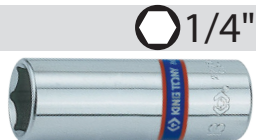
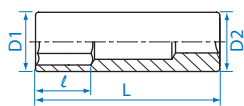
KT NO.	mm	D1 mm	D2 mm	l mm	L mm	⚖️	📦
233532M	3.2	5.7	11.8	3.5	24	9	20 / 600
233504M	4	6.8	11.8	4	24	9	20 / 600
233545M	4.5	7.4	11.8	5	24	10	20 / 600
233505M	5	8.0	11.8	6	24	10	20 / 600
233555M	5.5	8.7	11.8	6	24	10	20 / 600
233506M	6	9.2	11.8	7	24	10	20 / 600
233507M	7	10.3	11.8	7	24	11	20 / 600
233508M	8	11.4	11.8	8	24	11	20 / 600
233509M	9	12.8	12.0	8	24	13	20 / 600
233510M	10	14.3	13.0	9	24	14	12 / 360
233511M	11	15.8	14.2	9	24	19	12 / 360
233512M	12	16.8	15.5	9	24	22	12 / 360
233513M	13	17.8	16.5	9	24	25	12 / 360
233514M	14	19.6	18.5	9	24	32	10 / 300
233515M	15	20.9	19.3	12	24	39	10 / 300

KT NO.	inch	D1 mm	D2 mm	l mm	L mm	⚖️	📦
233505S	5/32	6.8	11.8	4	24	9	20 / 600
233506S	3/16	7.9	11.8	6	24	11	20 / 600
233507S	7/32	8.7	11.8	6	24	11	20 / 600
233508S	1/4	9.5	11.8	7	24	11	20 / 600
233509S	9/32	10.3	11.8	7	24	11	20 / 600
233510S	5/16	11.4	11.8	8	24	11	20 / 600
233511S	11/32	13.7	12.2	8	24	12	20 / 600
233512S	3/8	14.2	13.0	8	24	14	12 / 360
233514S	7/16	15.8	14.2	9	24	19	12 / 360
233515S	15/32	16.8	15.5	9	24	22	12 / 360
233516S	1/2	17.6	16.5	9	24	24	12 / 360
233518S	9/16	19.6	18.5	9	24	31	10 / 300

Deep Socket

2235M

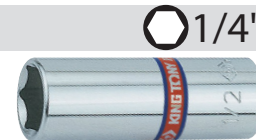
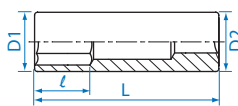
- DIN 3124, ISO 2725-1



KT NO.	mm	D1 mm	D2 mm	l mm	L mm	⚖️	📦
223504M	4	6.9	11.6	6	49.5	18	20 / 320
223545M	4.5	7.5	11.6	6	49.5	20	20 / 320
223505M	5	8.0	11.6	7	49.5	21	20 / 320
223555M	5.5	8.8	11.6	7	49.5	21	20 / 320
223506M	6	9.5	11.6	8	49.5	22	20 / 320
223507M	7	10.5	11.6	12	49.5	23	20 / 320
223508M	8	11.8	11.8	15	50	24	20 / 320
223509M	9	13.0	13.0	15	50	30	15 / 240
223510M	10	14.5	14.5	15	50	38	15 / 240
223511M	11	15.8	15.8	21	50	43	15 / 240
223512M	12	16.8	16.8	21	50	48	15 / 240
223513M	13	17.8	17.8	21	50	52	15 / 240
223514M	14	19.8	19.8	21	50	69	15 / 240
223515M	15	20.9	20.9	25	50	71	12 / 240

2235S

- Inch-ANSI/ASME B107.1



KT NO.	inch	D1 mm	D2 mm	l mm	L mm	⚖️	📦
223505S	5/32	6.8	11.8	6	50	19	20 / 320
223506S	3/16	7.9	11.8	7	50	20	20 / 320
223507S	7/32	8.7	11.8	9	50	21	20 / 320
223508S	1/4	9.5	11.8	9	50	23	20 / 320
223509S	9/32	10.3	11.8	15	50	24	20 / 320
223510S	5/16	11.8	11.8	15	50	25	20 / 320
223511S	11/32	13.0	13.0	15	50	32	15 / 240
223512S	3/8	14.5	14.5	15	50	41	15 / 240
223514S	7/16	15.8	15.8	21	50	47	15 / 240
223516S	1/2	17.6	17.6	21	50	54	15 / 300
223518S	9/16	19.6	19.6	21	50	71	15 / 270

